

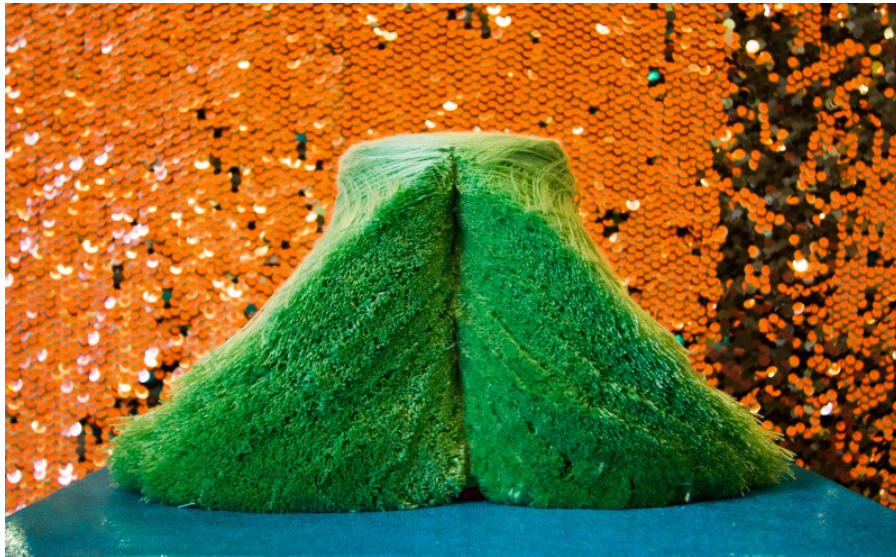
Wednesday, April 9, 2014

Encyclopedic Unpacking of Emotional Histories and Fictive Truths

Company: Christina Houle

Compensation: a small travel stipend will be provided for all performers

► [Share](#) | [Print](#) | [Download](#)



This performance will take place in an art gallery as part of Columbia University's MFA Visual Art's Thesis Show. I am seeking people with interesting faces, "normal body types" who have a unique and pedestrian look. The performance will be akin to something by Jerome Bell or Pascal Rambert. Please see my website for images of past works.

<http://christinasukhgianhoule.weebly.com/>

"Encyclopedic Unfolding of Emotional Histories and Fictive Truths" is a live performance and video installation that centers around the theme of how trauma is stored and spread throughout the body. I will make an audio track for 10 different performers that the individual actors will listen to throughout the performance. The track will have me lead the performers into a meditative and deeply focused state in a similar way to how a yoga or tai chi instructor will help students bring awareness to the body or breath. Then i will play a music track of the actor's choosing. While this track plays the actors will dance out something that they wish to let go. The choreography will only be directed by my voice on the audio track but it will be entirely up to the performer to decide how and when to move his/ her body. This performance is not about "acting" but about letting something real occur on stage and allowing others to witness it. The process will involve writing, vocalizing and movement. You do not need to be trained in these disciplines but should feel open to being coached in them.

The ten performers will be selected to represent global demographic distribution of race, gender, class, sexuality and age as indicated by the performer. As such I am seeking

6 Asian Performers

1 latino performer

1 mixed race performer

1 white performer

2 black performers

Additioanlly I am seeking 4 performers of any gender or background to perfrom in soft sculptural costumes for a duration performance that will accompany work described above.

Rehearsals will be

Monday the 21st of April 5-7pm

Tuesday the 22nd of April 5-7pm

Wednesday the 23rd of April 5-7pm

Thursday the 24th or April 5-7pm

Saturday the 26th of April from 9am-3pm

Performance will be

April 27th from 2-6pm

WHEN RESPONDING PLEASE INCLUDE

- 1) a headshot
- 2) your age, race, gender and sexuality
- 3) a good contact phone number
- 4) any conflicts you have with the above rehearsals or performance

Christina Houle
2103237492
christinasukhgianhoule.weebly.com

For more information:
Christina Houle
beingbelushi@gmail.com
210.3237492

[< back](#)

[previous listing](#) • [next listing](#)