

FOR AUDIENCES

[Community Calendar](#) [Artist Directories](#) [Networks](#) [Donate](#) [Volunteering](#)

Thursday, October 3, 2019

GREGORY LAU

Company: THE PLAYGROUND NYC
Venue: GIBNEY 280
Location: NEW YORK, NY

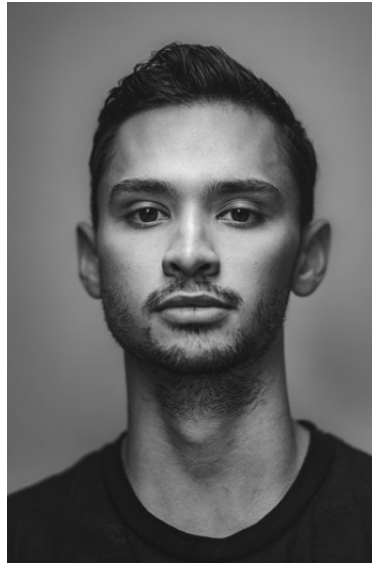
[► Share](#) | [Print](#) | [Download](#)

Photo Credit: Rahi Rezvan

GREGORY LAU

Thursday, October 3, 2019

10:00 am - 12:00 pm

\$5.00

Gibney Dance: Agnes Varis Performing Arts Center, 280 Broadway, NYC
Entrance 53A Chambers

The Playground NYC allows dancers to experience various choreographic styles and ideas, engage with a new community of dancers, and gather resourceful information and inspiration from the array of choreographers involved. In turn, established choreographers are paid for their creative investigations, are given free space to explore new movement with professional dancers, and are provided with the opportunity to establish relationships with new dancers and fellow choreographers.

BIO:

Gregory was born and raised in Honolulu, Hawaii. He began his training at Mid-Pacific Institute School of the Arts, is a graduate of LaGuardia Arts High School and attended The Juilliard School, under the direction of Lawrence Rhodes. He received additional training from the Alvin Ailey School, French Academy of Ballet, Cedar Lake, Nutmeg Conservatory and The Canadian National Ballet School. After attending The Juilliard School, Gregory joined Nederlands Dans Theater 2 from 2013-2016 and has been dancing for Nederlands Dans Theater 1 since 2016. Gregory has been a recipient of the NFAA YoungArts Level 1 Award in Modern Dance and Ballet. He has created and performed works by Jiri Kylian, Crystal Pite, Ohad Naharin, Sharon Eyal, Marco Goecke, Paul Lightfoot & Sol Leon, Hans Van Manen, Johan Inger, Edward Clug, Marne & Imre Van Opstal, Medhi Walerski, Alexander Ekman, Jiri Pokorny, Jose Limon and Camille A. Brown. He recently choreographed a piece entitled "As We Watched" for the RGB Gala in Osaka, Japan.

CLASS DESCRIPTION:

The class will play with the idea of awareness and community. Attempting to decondition the body's habitual patterns to arrive to a place of mindfulness with the body and the space around it. We will explore textures of the body, ideas of displacement, communicating with space and partnering focused on improvisation. I'm curious to have this research inform a community improvisation or phrase work with a shifted perspective.

THE PLAYGROUND NYC
280 Broadway Entrance 53A Chambers
NEW YORK, NY, 10007
<http://www.theplaygroundnyc.org/about-home>

Schedule
October 3, 2019: 10:00am

[< back](#)

[previous listing](#) • [next listing](#)