

DANCE. WORKFORCE. RESILIENCE. INITIATIVE

[About](#)
[Advisory Group](#)
[Network](#)
[DWR Fund](#)
[DWR Hub](#)
[Dance Industry Census](#)
[Roundtables](#)
[Launch Event](#)
[Research](#)

Thursday, December 19, 2019

The Words We Use To Talk About...Thriving!

By Dance/NYC


[Share](#) | [Print](#) | [Download](#)

This event has already occurred. Enjoy event details below, and stay tuned for photos and video.

When: Thursday, December 19, 2019, 7:00 p.m. to 9:00 p.m.

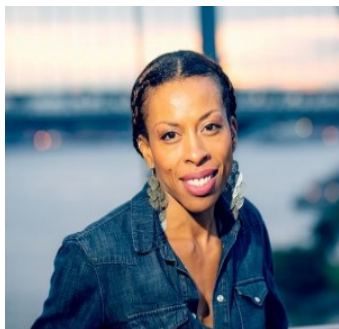
Where: CPR- Center for Performance Research, 361 Manhattan Ave, Unit 1, Brooklyn, NY 11211

This event is FREE. Registration is required [Register here](#)

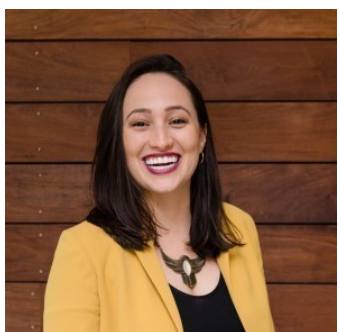

Accessibility: [Center for Performance Research](#) is an accessible venue located on the ground floor. The entrance is located at 361 Manhattan Avenue. and all restrooms are gender inclusive and wheelchair accessible. Studios and rooms are lit by fluorescent lights. We will not be able to provide child care, health care, or ASL interpretation for this event. If you require reasonable accommodation, please contact Yijing Hong at least two weeks prior to the event via email at yhong@dance.nyc or call 212-966-4452 (voice only).

About: Join entrepreneurial strategist and President of Yancey Consulting Lisa Yancey and Dance/NYC Executive Director Alejandra Duque Cifuentes for an armchair conversation on the mindset and practice of thriving. In a cultural and workplace landscape that favors productivity over human value, what needs to happen for dance makers and cultural workers to develop practices that center personal and professional well-being? How can institutional structures adapt to ensure the resiliency and sustainability of the workforce? This conversation aims to better understand the state of the field and present considerations for how we can move forward to create a thriving and more equitable dance ecosystem.

Panelist Biographies:



Originally from Atlanta, Georgia, LISA YANCEY is the president Yancey Consulting (YC) and co-founder of SorsaMED and The We's Match. With 18 years of practice, YC has served over 100 nonprofit organizations, grantmakers, and individuals. Advising across arts and culture, public space, and justice-based sectors, YC specializes in strategic organizational development, economic modeling, evaluation and assessments, board development, leadership coaching, and executive transition support. SorsaMED is a biotechnology company engineering cannabinoids infused with nutrient-enriched microalgae for therapeutic pain management, with a specific concern for sickle cell anemia sufferers, especially youth. The We's Match is a social impact enterprise committed to helping Black women entrepreneurs in scalable industries reach or sustain a minimum of \$1 million in operating net revenues while prioritizing their well-being. Lisa's dedication to supporting equitable outcomes for systematically disenfranchised people is the seamless thread that binds these companies. Lisa matriculated from Boston College Law School and Emory University. She is a former dancer and choreographer. She is also a member of the New York State Bar Association. Lisa currently lives in Mount Vernon, New York, and serves on the board of Fractured Atlas. *Photo credit: Lisa Yancey by Lisa Yancey, courtesy Yancey Consulting*



ALEJANDRA DUQUE CIFUENTES is an immigrant, activist, artist, producer, and educator. With more than 10 years of production and stage management experience in theatre and dance, she has toured nationally and internationally with Zaccho Dance Theatre, Bandaloop, Dancing in The Streets, The Foundry Theatre, and Columbia University School of the Arts, among others. As a teaching artist, Ms. Duque Cifuentes taught children and adults of all ages how to express themselves through theatre and movement practice in over 100 New York City public schools and through community theatre programs. In 2011 she founded Theatre That Transcends, which taught local, underserved communities how to express themselves and address community issues through the art of theatre. As an activist, she plays an integral part in advancing a more equitable arts and cultural ecology by working on measures to increase access, justice, equity, and inclusion within dance for disabled artists, immigrant artists, and artists of color in the five boroughs of New York City. Ms. Duque Cifuentes is a member of the National Association for Latino Arts and Culture, Women of Color in the Arts, the Children Museum of Manhattan's Dance Portal Advisory Board, and Eva Yaa Asantewaa's Curatorial Advisory Team at Gibney, and she is an advisor for the Latinx Artists Retreat, an annual convening for Latinx cultural producers

across all artistic disciplines and fields. She was born in Medellin, Colombia and holds a Bachelor of Arts degree in Drama and Theatre Arts from Columbia University School of General Studies. *Photo credit: Alejandra Duque Cifuentes by Jo Chiang*

Leadership support for this event has been provided by Emmanuel Baptist Church Mission & Benevolence Fund. Dance/NYC convening is made possible, in part, by public funds from the New York City Department of Cultural Affairs, in partnership with the City Council, the New York State Council on the Arts and the National Endowment for the Arts.



Dance/NYC seeks partners and speakers with a variety of viewpoints for its events with the goal of generating discussion. The inclusion of any partner or speaker does not constitute an endorsement by Dance/NYC of that partner's or speaker's views.

[< back](#)

[previous listing](#) • [next listing](#)