

## FOR AUDIENCES

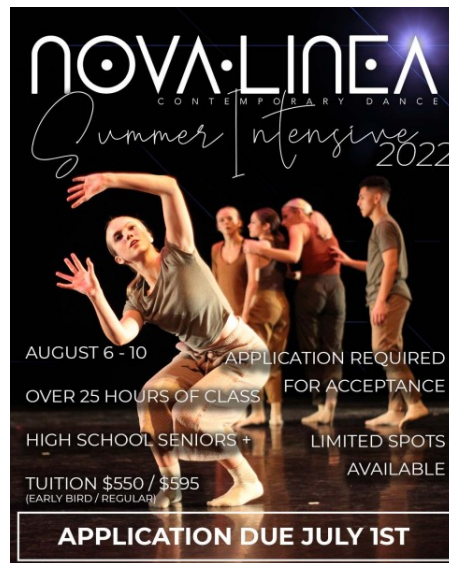
[Community Calendar](#) | [Volunteering](#)

August, 6-10, 2022

### Summer Intensive 2022

Company: Nova Linea Contemporary Dance  
Venue: Accent on Dance Studios  
Location: Waukesha, WI

► [Share](#) | [Print](#) | [Download](#)



Nova Linea Contemporary Dance is excited to announce our second annual Summer Intensive! This 5-day event will take place from Saturday August 6th to Wednesday August 10th and be held at Accent on Dance Studios Inc. in Waukesha, WI. Class will begin at approximately 5 PM on the 6th, and conclude at approximately 1 PM on the 10th. The workshop is geared towards high school seniors, college-aged students, and young professionals who are looking to pursue a career in dance. Classes will include modern, contemporary, Nova Linea repertoire, and improvisation. Application/Registration is due by July 1st. For more information, visit our website at [www.novalineadance.com/intensive](http://www.novalineadance.com/intensive).

Housing will not be included in the tuition for the Summer Intensive. Nova Linea is happy to provide transportation to and from Accent on Dance Studios Inc. from the Marriott Milwaukee West hotel. Students will need to find their own transportation to and from the airport. Students not at this hotel will need to find their own transportation. Any questions regarding Housing/Transportation can be emailed to [info@novalineadance.com](mailto:info@novalineadance.com).

Nova Linea Contemporary Dance  
N20W22942 Watertown Rd  
Waukesha, WI, 53186

Schedule  
August 6, 2022: 5:00pm  
August 10, 2022: 6:00pm

[< back](#)

[previous listing](#) • [next listing](#)